

2022

codent

Codent Headquarter

Email:info@codenthealthcare.com

Codent Europe GmbH

Email:info@codent-europe.com

Codent China

Email:service@codent-tech.com.cn

www.codent-tech.com

QS-B0-004 B

codent
Let's smile together



ABOUT US

Codent's history began in 1985 when Mark Fang launched a dental and surgical instrument development and production centre in Taipei (Taiwan). Several years later, he made the decision to transfer the business to Kaohsiung, the nerve centre of the medical industry in South East Asia. Since then, Codent has continued to specialise in the design, manufacture and distribution of dynamic dental and surgical instruments aiming for excellence in each of its three areas: R&D, Production and Sales.

Considered as the region's pioneer in the dental industry, today Codent is one of the leading companies in the sector in Asia and worldwide. Operating in nearly 100 countries, Codent has cutting-edge infrastructures combining technicality, quality and innovation enabling it to position itself as the perfect partner for the most demanding dentists.

In order to be closer to its customers in the Europe/Middle East/Africa (EMEA) zone, Codent set up a European subsidiary in Leipzig (Germany), Codent Europe GmbH to develop its regional platform responsible for distribution, technical support, customer service and training.

RESEARCH AND DEVELOPMENT

Codent's design office in Kaohsiung has established itself as one of the most important in Asia in the search for innovative technologies for air turbines, contra-angles, micromotors and surgical devices. Its regular collaborations with design offices in Europe and the United States, its quality standards which are some of the highest on the market and the stringent nature of its specifications in terms of precision and hygiene, guarantee the development of high-level products that match the expectations of the most demanding users. Constantly listening to dentists, Codent continues to innovate and design products suited to their constraints and the specific features of their job.

PRODUCTION

State-of-the-art equipment, the use of high-quality materials and extensive testing means that the Codent range complies with the strictest standards. Codent is ISO 13485 certified.

Codent benefits



Durable

Even after several years of use, the push button chuck and the clamping mechanism retain their holding strength.



Titanium

The handpieces in the Apollo range have a anti-slip titanium coating which increases the durability of the instruments and ensures a comfortable grip.



Precision

The handpieces offer optimal torque enabling practitioners to work with precision for the comfort of their patients.



Quiet

The handpieces in the Apollo range are some of the quietest on the market due to the quality of their ceramic bearings.



Optic

The illumination of the handpieces (up to 32,000 lux) guarantees maximum visibility for practitioners.



Sterilization

The handpieces are designed to be sterilised regularly by autoclaving and to withstand temperatures up to 135°C while remaining durable and efficient.



Thermal disinfection

The option to use a thermal disinfectant to clean and disinfect the handpieces prevents the risk of infection.

CONTENTS

Air turbines/Couplings	4
Apollo range	6
Couplings	12
Contra-angles	16
Apollo range	18
Oral hygiene	26
Prophy jet	27
Prophylaxis powder	28
Micromotors	32
Electric motors	34
Air motors	36
Accessories	38
Spare parts	40

PRECISION
AND EFFICIENCY



APOLLO RANGE

Excellent torque

Ceramic Bearings

Perfect illumination

Titanium coating

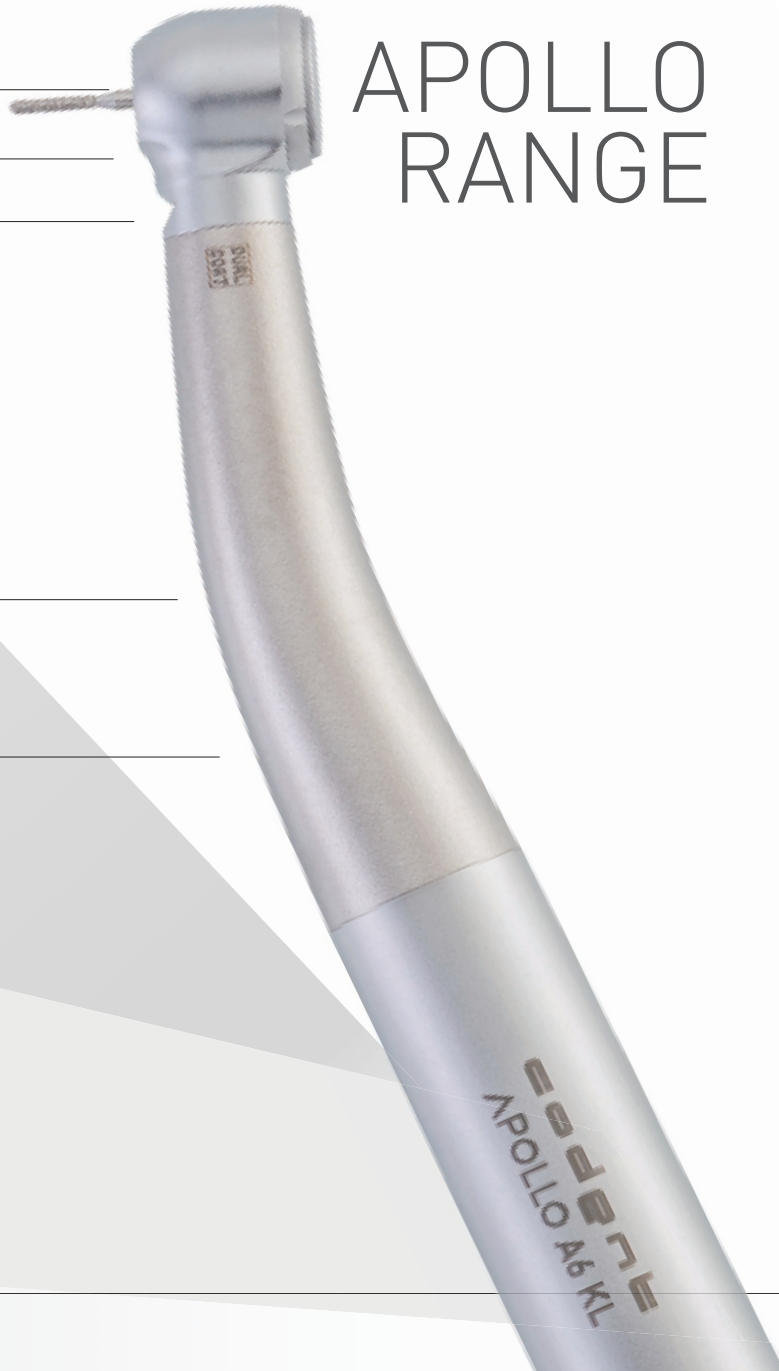
Lightweight

HIGH SPEED AIR TURBINES

Excellent torque and excellent visibility.

Air turbine designed for all applications in restorative and prosthesis treatments.

Designed to feel good in the hand.



APOLLO SERIES A6 AIR TURBINES

quattro sprays - dual coat titanium coating - ceramic bearings - 1-year warranty



MODEL A6 L

Standard head - NSK®PTL® coupling
Burs:Ø1.6 - Fiber optic
Rotation speed:300,000-380,000 rpm
Head size: Ø12.5 x H13.2 mm
510 USD

MODEL A6 M4

Standard head -MIDWEST®M4
Burs:Ø1.6 - Non-Fiber optic
Rotation speed:300,000-380,000 rpm
Head size: Ø12.5 x H13.2 mm
270 USD

MODEL A6

Standard head -NSK® QD® coupling
Burs:Ø1.6 - Non-Fiber optic
Rotation speed:300,000-380,000 rpm
Head size: Ø12.5 x H13.2 mm
270 USD

MODEL A6 N

Standard head -NSK®MACH® coupling
Burs:Ø1.6 - Non-Fiber optic
Rotation speed:300,000-380,000 rpm
Head size: Ø12.5 x H13.2 mm
370 USD



MODEL A6 KL

Standard head -KaVo®MULTiflex® coupling
Burs:Ø1.6 - Fiber optic
Rotation speed:300,000-380,000 rpm
Head size: Ø12.5 x H13.2 mm
510 USD

MODEL A6 K

Standard head -KaVo®MULTiflex® coupling
Burs:Ø1.6 - Non-Fiber optic
Rotation speed:300,000-380,000 rpm
Head size: Ø12.5 x H13.2 mm
370 USD

APOLLO SERIES A5 AIR TURBINES

quattro sprays - dual coat titanium coating - ceramic bearings - 1-year warranty



MODEL A5 L

Miniature head -NSK®PTL® coupling
Burs:Ø1.6 - Fiber optic
Rotation speed:380,000-460,000 rpm
Head size: Ø10.8 x H12.5 mm
510 USD

MODEL A5 M4

Miniature head -MIDWEST®M4
Burs:Ø1.6 - Non-Fiber optic
Rotation speed:380,000-460,000 rpm
Head size: Ø10.8 x H12.5 mm
270 USD

MODEL A5

Miniature head -NSK® QD® coupling
Burs:Ø1.6 - Non-Fiber optic
Rotation speed:380,000-460,000 rpm
Head size: Ø10.8 x H12.5 mm
270 USD

MODEL A5 N

Miniature head -NSK®MACH® coupling
Burs:Ø1.6 - Non-Fiber optic
Rotation speed:380,000-460,000 rpm
Head size: Ø10.8 x H12.5 mm
370 USD



MODEL A5 KL

Miniature head -KaVo®MULTiflex® coupling
Burs:Ø1.6 - Fiber optic
Rotation speed:380,000-460,000 rpm
Head size: Ø10.8 x H12.5 mm
510 USD

MODEL A5 K

Miniature head -KaVo®MULTiflex® coupling
Burs:Ø1.6 - Non-Fiber optic
Rotation speed:380,000-460,000 rpm
Head size: Ø10.8 x H12.5 mm
370 USD



MODEL A45 L

45° head - NSK® PTL® coupling
 Burs: Ø1.6 - Fiber optic
 Rotation speed: 380,000-450,000 rpm
 Head size: Ø11.2 x H13.5 mm
580 USD



MODEL A45 M4

45° head - MIDWEST® M4
 Burs: Ø1.6 - Non-Fiber optic
 Rotation speed: 380,000-450,000 rpm
 Head size: Ø11.2 x H13.5 mm
320 USD

MODEL A45

45° head - NSK® QD® coupling
 Burs: Ø1.6 - Non-Fiber optic
 Rotation speed: 380,000-450,000 rpm
 Head size: Ø11.2 x H13.5 mm
350 USD

MODEL A45 N

45° head - NSK® MACH® coupling
 Burs: Ø1.6 - Non-Fiber optic
 Rotation speed: 380,000-450,000 rpm
 Head size: Ø11.2 x H13.5 mm
400 USD



MODEL A45 KL

45° head - KaVo® MULTIflex® coupling
 Burs: Ø1.6 - Fiber optic
 Rotation speed: 380,000-450,000 rpm
 Head size: Ø11.2 x H13.5 mm
580 USD

MODEL A45 K

45° head - KaVo® MULTIflex® coupling
 Burs: Ø1.6 - Non-Fiber optic
 Rotation speed: 380,000-450,000 rpm
 Head size: Ø11.2 x H13.5 mm
400 USD

45° head angle making
 it easier to treat
 hard to reach areas



Couplings compatible with all optic and non-optic air turbines



Q4M COUPLING

Compatible with NSK® MACH® instruments
4-holes - No light
105 USD

Q6M- LED COUPLING

Compatible with NSK® PTL® instruments
6-holes - LED illumination
185 USD



Q4K COUPLING

Compatible with KaVo® MULTiflex® instruments
4-holes - No light
105 USD



Q5K- COUPLING

Compatible with KaVo® MULTiflex® instruments
5-holes - illumination
195 USD



Q6K- LED COUPLING

Compatible with KaVo® MULTiflex® instruments
6-holes - LED illumination
195 USD



Q6KW- LED COUPLING

Compatible with KaVo® MULTiflex® instruments
6-holes - LED illumination -
Water controller
215 USD



Q4Q COUPLING

Compatible with NSK® QD® instruments
4-holes - No light
70 USD



Q2Q COUPLING

Compatible with NSK® QD® instruments
2-holes - No light
70 USD

instruments compatible with couplings



A6 L
A6
A6 N



A5 L
A5
A5 N



A45 L
A45



A6 KL
A6 K



A5 KL
A5 K



A45 KL
A45 K



Q4M/Q6M-LED



QD



Q6K-LED



Q6KW-LED



Q5KW-Fiber Optic



Q6K-LED/ Q6KW-LED/ Q4K



Q4M / Q6M-LED



4 HOLES



APJ KV

APJ NM

APJ M4

Pediatric Dentistry Handpiece



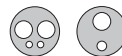
MODEL A3

Miniature head - NSK® QD coupling
 Burs: Ø1.6 - Non-Fiber optic
 Rotation: 360,000 rpm - 440,000 rpm
 Head size: Ø10.9 x H11.9 mm
210 USD



MODEL A3 M4 / A3 B2

Miniature head - MIDWEST® M4
 Burs: Ø1.6 - Non-Fiber optic
 Rotation: 360,000 rpm - 440,000 rpm
 Head size: Ø10.9 x H11.9 mm
190 USD



APOLLO A4



MODEL A4

Standard head - NSK® QD coupling
 Burs: Ø1.6 - Non-Fiber optic
 Rotation: 300,000 rpm - 380,000 rpm
 Head size: Ø12.5 x H13 mm
210 USD



MODEL A4 M4

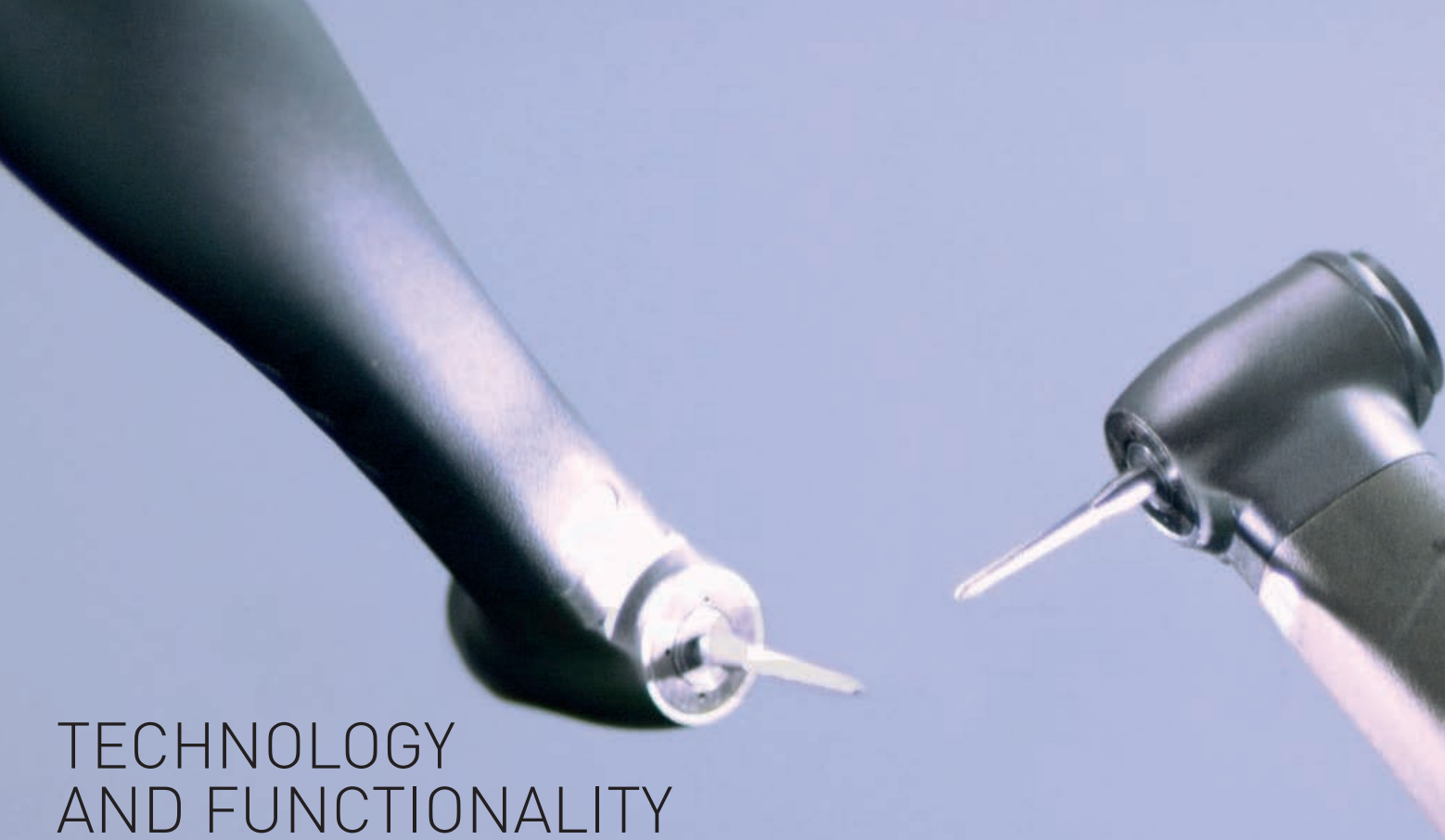
Standard head - MIDWEST® M4
 Burs: Ø1.6 - Non-Fiber optic
 Rotation: 300,000 rpm - 380,000 rpm
 Head size: Ø12.5 x H13 mm
190 USD



MODEL A4 B2

Standard head - BORDEN® B2
 Burs: Ø1.6 - Non-Fiber optic
 Rotation: 300,000 rpm - 380,000 rpm
 Head size: Ø12.5 x H13 mm
190 USD





TECHNOLOGY
AND FUNCTIONALITY

APOLLO RANGE

Exceptional durability

Excellent illumination

DUAL COAT

Lightweight

CONTRA-ANGLES AND HANDPIECES

Powerful and durable for precision work, an ergonomic design making it feel good in the hand and reducing vibrations so as to guarantee daily comfort for both doctor and patient.



both fiber optic and non-fiber optic, Dual Coat titanium coating - 1-year warranty



MODEL A65 L

1:5 Increasing by 5
 Quattro spray - Fiber optic - Burs:Ø1.6
 Max. speed: 200,000 rpm
695 USD

MODEL A65

1:5 Increasing by 5
 Quattro spray - Non-Fiber optic - Burs:Ø1.6
 Max. speed: 200,000 rpm
580 USD



MODEL A61 L

1:1 Direct drive
 Single spray - Fiber optic - Burs:Ø2.35
 Max. speed: 40,000 rpm
515 USD

MODEL A61

1:1 Direct drive
 Single spray - Non-Fiber optic - Burs:Ø2.35
 Max. speed: 40,000 rpm
395 USD

both fiber optic and non-fiber optic, Dual Coat titanium coating - 1-year warranty



MODEL A16 L

16:1 Reduction by 16
 Single spray - Fiber optic - Files:Ø2.35
 Max. speed: 2,500 rpm (endodontic)
735 USD

MODEL A16

16:1 Reduction by 16
 Single spray - Non-Fiber optic - Files:Ø2.35
 Max. speed: 2,500 rpm (endodontic)
625 USD



MODEL A11 L

1:1 Straight handpiece, Direct drive
 Single spray - Fiber optic - Burs:Ø2.35
 Max. speed: 40,000 rpm
515 USD

MODEL A11

1:1 Straight handpiece, Direct drive
 Single spray - Non-Fiber optic - Burs:Ø2.35
 Max. speed: 40,000 rpm
415 USD

APOLLO SERIES SURGICAL CONTRA-ANGLES

fiber optic, non-fiber optic, dual coat titanium coating, 1-year warranty



MODEL A20 L

20:1 Reduction external implant dual irrigation system
Single spray - Max. torque 80 Ncm - Fiber optic - Drill:Ø2.35
735 USD

MODEL A20

20:1 Reduction external implant dual irrigation system
Single spray - Max. torque 80 Ncm - Non-Fiber optic - Drill:Ø2.35
625 USD

- Dual Coat Body in titanium
- Push button
- Max. torque 80 Ncm
- Max. speed 2,000 rpm
- Suitable for all E-type surgery motors





MODEL A31LR K KaVo®
 Prophylaxis - 2:1 Reduction
 Max. speed 20,000 rpm
 Attachments (brushes, cups)
 Burs: Ø2.35
235 USD



MODEL A80LD K KaVo®
 Restorative 1:1 Direct drive
 Max. speed 40,000 rpm
 Burs: Ø1.6
235 USD



MODEL H11
 External spray Straight - 1:1 Direct drive
 Max. speed 25,000 rpm - Burs: Ø2.35
140 USD



MODEL A68LH K KaVo®
 Restorative 1:1 Direct drive
 Max. speed 40,000 rpm
 Burs: Ø2.35
235 USD



MODEL A67LH K KaVo®
 Restorative 2:1 Reduction
 Max. speed 20,000 rpm
 Burs: Ø2.35
235 USD



MODEL H41
 External spray contra-angle - 1:1 Direct drive
 Max. speed 25,000 rpm - Burs: 2.35
180 USD



MODEL AMP-AF16R
 Endodontic 16:1 Reduction
 File: Ø2.35
235 USD



MODEL AMP
 Endodontic 1:1
 File: Ø2.35
105 USD



MODEL AE4N
 External spray - MIDWEST® 4-hole connection
220 USD

Oral hygiene

Prophylaxis.

Apollo prophy Jet is an air powered polishing system in the form of a straight handpiece connected to a coupling. Light and easy to clean, Apollo prophy Jet guarantees optimal results when removing stains and is used with Magic Pearl prophylaxis powder.



The 80mm attachment, set at a 60° angle, is star-shaped so the 4 sprays provide the necessary precision to treat hard to reach areas.



The handpiece, which can be autoclaved, is connected to a powder case.



The powder case has 8 holes guaranteeing perfect air circulation.



MODEL APJ KV

APOLLO Prophy Jet KaVo® MULTIflex® raccord
535 USD

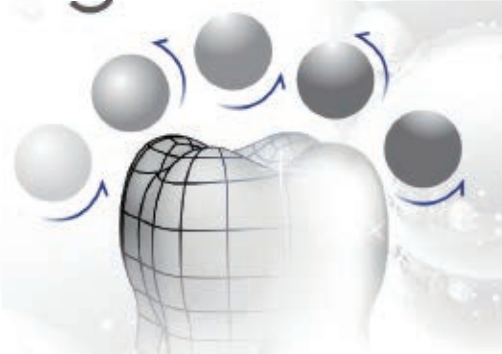
MODEL APJ NM

APOLLO Prophy Jet NSK® PTL® QUICK raccord
535 USD

MODEL APJ M4

APOLLO Prophy Jet - Connection MIDWEST® 4 holes
535 USD

Magic Pearl



For around ten years, MAGIC PEARL powder has proved to be a reliable and non-aggressive prophylaxis powder. The polishing effect of the grains provides gentle effective cleansing. Today, we have improved MAGIC PEARL yet further.



Micro-beads 50 to 60um

Non-abrasive mechanical tooth cleaning



Respect for the enamel

Enamel protection, tested in a professional laboratory.



Treatments

Prophylactic and gum disease treatments



pH Stabilisation

Reduces oral acidity, neutralises pH within 10 days.



Effectiveness

Significant increase in whiteness.



Limits gingival haemorrhages

Significant coagulant effect, especially in the gums during subgingival treatment.

Developed and tested by dentists.

Magic Pearl powder has spherical grains which safely eliminate stains, biofilm and tartar without causing a risk to the tooth enamel and gums. Its calcium-carbonate based composition helps to minimise cleaning of your air polisher.

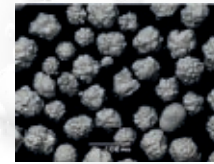
Approved by European and international standards.

The powder reduces the acidity of oral fluids and prevents the development of bacteria by impeding the formation of biofilm. This product is ideal for treating the teeth of patients sensitive to sodium bicarbonate or who suffer from high blood pressure.

Non-abrasive, non-invasive.

The very low hardness* of the CaCO_3 particle is less than the hardness of the dentine so it does not damage the enamel while the hardness of other powders (NaHCO_3) has an abrasive effect on the tooth surface.

*Source: Friedrich Mohs' scale (1-10) measuring the hardness of minerals



MP-1

Magic Pearl Prophylaxis
Box of powder of 4 x 300g bottles
120 USD

SPEED AND POWER



MICRO MOTOR



iM100

Brushless and fibre optic
Electric motor set

iM100

brushless and fibre optic electric micromotor set
equipped with a control box, adaptor and cable
E-motor type connection - LED light
2030 USD

iM100 - Brushless electric motor

- Max. torque: 3.4 Ncm
- Max. speed: 2,000 rpm - 40,000 rpm
- Weight: 87g
- Light: LED

Control Box

- Adaptor: AC 100-240V
- Voltage: DC 32V 50/60Hz
- Output power: 120W max.
- Dimensions: D150mm x W125mm x H56mm
- Weight: 500g
- Function: 2 memory modes, reverse rotation adjustment, three speeds



iM100 CABLE

Optic electric motor cable
240 USD



iM100 MOTOR

Electric motor
E-Motor type, led illumination
760 USD



iM100 - integrated system

Fiber optic, brushless electric motor and
its individual components

iM100- integrated system

Brushless electric micromotor with fiber optic equipped with a control box
E-Motor type, led illumination
1130 USD

- Output power: 24V AC 50/60Hz
- Max. torque: 3.4 Ncm
- Max. speed: 2,000 rpm - 40,000 rpm
- Control box dimensions: W123mm x H63mm



Air

C4-hole cable to connect the
dental chair to the control box



Electricity

Connection cable from the
micromotor to the control box



Activation

Connect the power cable
to the power supply

AIR MOTORS



MODEL AI2N

Internal spray - 25,000 rpm
Borden® 2 - holes connection
350 USD



MODEL AI4N

Internal spray - 25,000 rpm
Midwest® 4- holes connection
350 USD



MODEL AI6N-D

Internal spray - 25,000 rpm
Led illumination 6-holes connection
635 USD



MODEL AI6N-L

Internal spray - 25,000 rpm
Halogen illumination - 6-holes connection
600 USD

ACCESSORIES

ACCESSORIES



Light power pack

A power supply two 6-hole cable
189 USD



Power module

Two-way power source with electricity
129 USD



HOSE4

4- hole connector
for high speed handpieces
49 USD



HOSE6

6-hole connector
for high speed handpieces
59 USD



HOSE8

8- hole connector[®]
for Bien-Air / NSK high speed handpieces
119 USD



Lubricant

Premium Plus Spray 600ml
Lubricates & cleans
29 USD



LED-N

LED bulb for NSK[®] PTL coupling
3.5V - 150mA - 5500K
69 USD



LED-K

LED bulb for KaVo[®] "Multiflex"[®] coupling - Codent Al6N
3.5V - 150mA - 5500K
69 USD



MODEL TBIPA1

Internal spray head
1:1 drive Max. speed 40,000 rpm - Burs:Ø2.35
189 USD

SPARE PARTS

SPARE PARTS

cartridge



CCA345

For Codent A45L / A45 air turbine

140 USD



CCHPC4

For Codent A6

Codent Apollo four sprays - Standard head

140 USD



CCHPZ4

For Codent A5

Codent appolo four sprays - Miniture head

140 USD



CPJDCG

For Codent A4

Codent Apollo single spray - Standard head

140 USD



CPHDCG

For Codent A3

Codent Apollo, single spray - Miniture head

140 USD



CNMLS

For NSK® Mach Lite S air turbine

140 USD



CKGS800

For KaVo® GentleSilence 8000 air turbine

140 USD



CKGS500

For KaVo® GentleSilence 5000 air turbine

140 USD